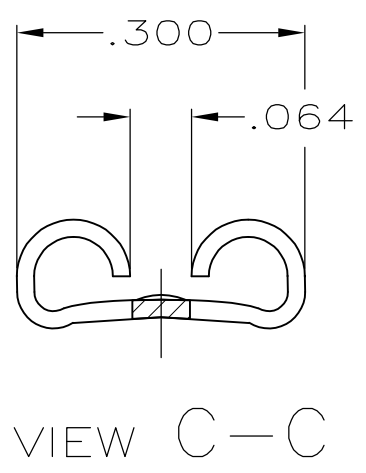
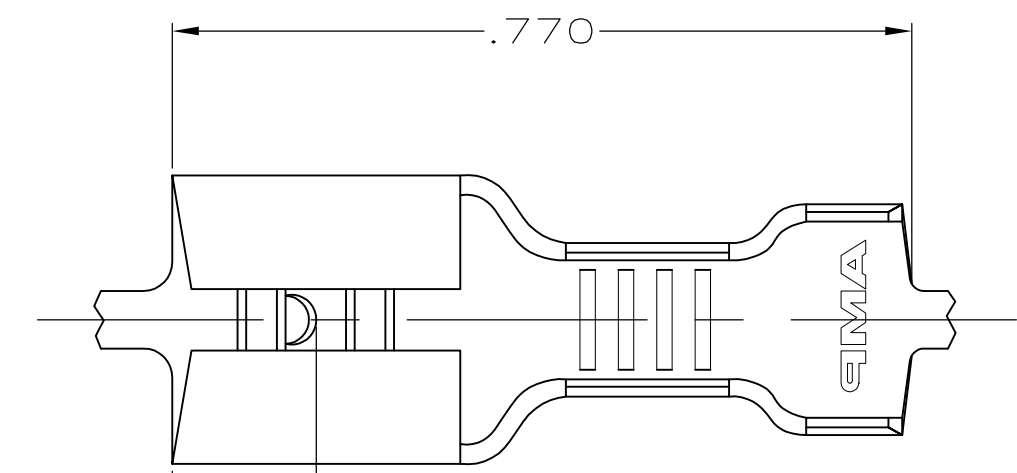
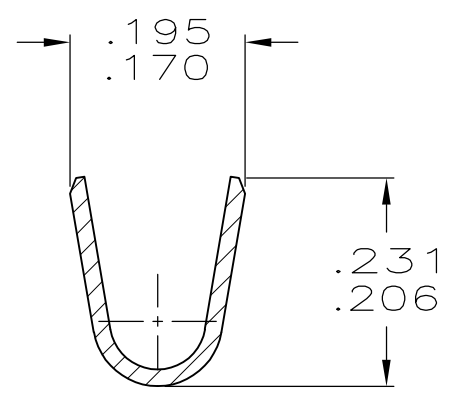
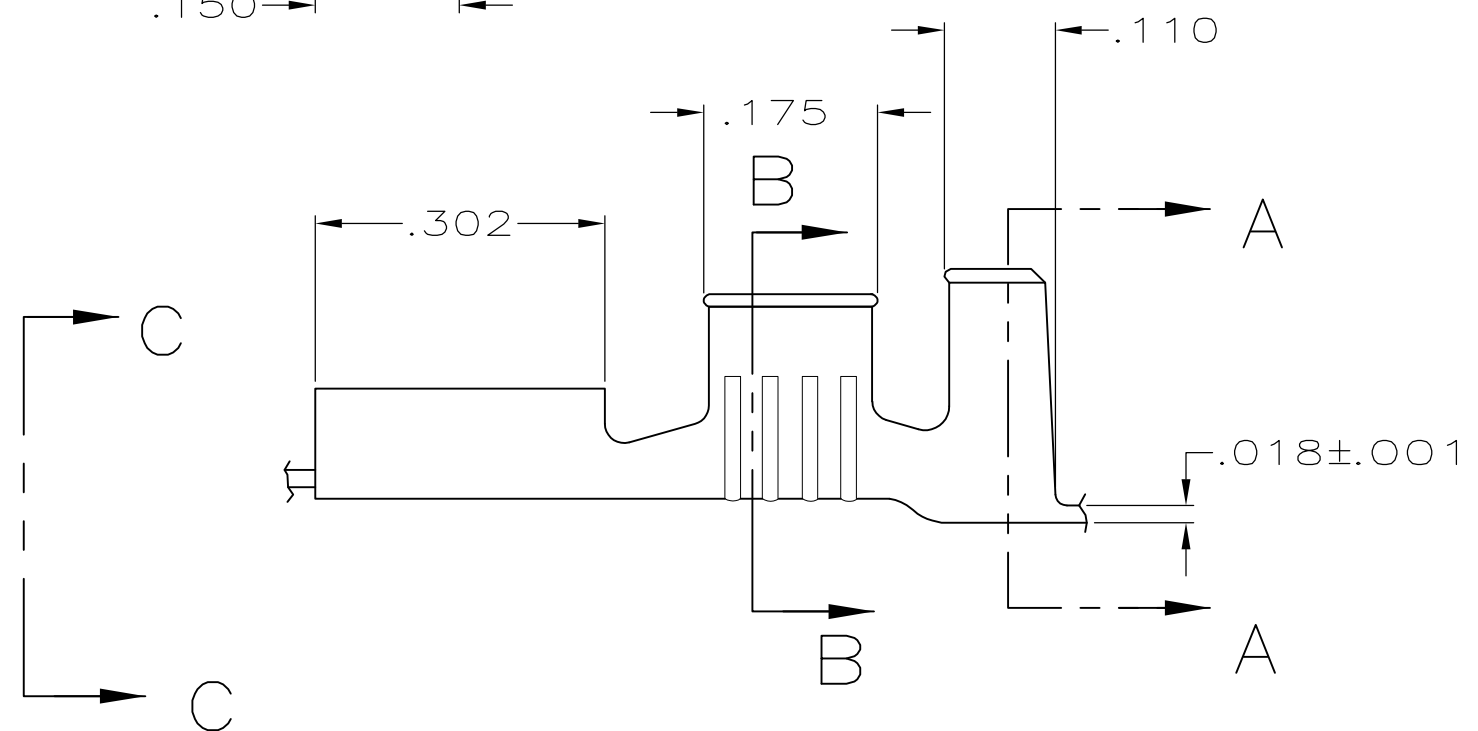


THIS DRAWING IS UNPUBLISHED. RELEASED FOR PUBLICATION
 © COPYRIGHT - By - ALL RIGHTS RESERVED.

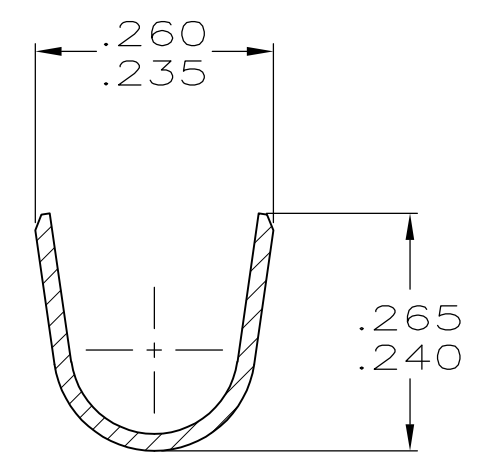
LOC	DIST	REVISIONS			
P	LTR	DESCRIPTION	DATE	DWN	APVD
AF	50	L	REVISED PER ECR-12-013459	27NOV2012	KH PD



- 1 CONTINUOUS STRIP ON REELS.
- 2 MATING TAB THK TO BE .032±.001.
- 3 WIRE SIZE IS #12-#10 AWG.
- 4 INSULATION RANGE IS .150-.200 DIA.
- 5 PRELIMINARY - NOT FOR PRODUCTION



SECTION B-B



SECTION A-A

.000150 MIN NICKEL	H04 C.R.STEEL	5 62428-4
TIN	H03 PHOS BRONZE	62428-3
TIN	BRASS	62428-2
-	H04 BRASS	5 62428-1
FINISH	MATERIAL	PART NO.

THIS DRAWING IS A CONTROLLED DOCUMENT.		DWN	JR RUTH	9/12/96	STE TE Connectivity		
DIMENSIONS: INCHES		CHK	MS FEHER	9/12/96			
		APVD	J HUZVAR	9/12/96			
		PRODUCT SPEC		NAME		RECEPTACLE, FASTON, .250 SERIES	
TOLERANCES UNLESS OTHERWISE SPECIFIED:		APPLICATION SPEC		SIZE	CAGE CODE	DRAWING NO	RESTRICTED TO
0 PLC ± -		-		A3	00779	C-62428	-
1 PLC ± -		-		CUSTOMER DRAWING			
2 PLC ± -		-		SCALE	1:1	SHEET	1 OF 1
3 PLC ± .015		-		REV			
4 PLC ± -		-		L			
ANGLES ± -		-					
MATERIAL SEE TABLE		FINISH SEE TABLE					